

**Wherever
you go,
take a
Complete
Cruising
Solution
with you!**

In this issue...

Wireless e-mail for
marine SSB.....1

Link GPS, radar to
paper charts.....1

SCS Pactor-II
Modems set e-mail
standard.....2

New electronic
chart CD's.....2

Radio School
returns to San
Francisco Bay.....3

Boat Show Bar-
gains.....3

Ask the Complete
Cruiser.....4

...and much more!

Published quarterly by Complete Cruising Solutions, a partnership offering the finest products for boaters at 1813 Clement Avenue, Bldg. 24 - Alameda Marina, Alameda, CA 94501. For information or subscriptions call (800) 584-4114 or (510) 769-1547, or send e-mail to info@waypoints.com.

©1999, Complete Cruising Solutions. Please call for permission to reproduce any information.

No Ham license? SailMail is a cruiser's ticket to... Wireless E-Mail for Marine SSB

Put two sailing engineers and a fun race together and what do you get? *SailMail*.

Stan Honey and Jim Corenman planned on keeping in touch from their yachts during the '98 Pacific Cup Race by Ham e-mail. They thought others would be interested in radio e-mail, too; however, most of the fleet weren't hams. So, Stan obtained marine SSB frequencies for e-mail for the fleet—*SailMail*. After the race, Stan chose (with the FCC's permission) to continue offering marine SSB e-mail access to cruisers.

SailMail members are able to send and receive Internet e-mail at rates varying from 10-140 characters per second—roughly 110 to 1200 baud. "Surfing the net" would be impossible at such slow speeds, but the data transfer rate is sufficient to send and receive text messages. *SailMail* members can send e-mail to or receive from any Internet, *SailMail*, or Ham e-mail user. Messages are limited to 5 Kb—about two typed pages.

To get started, you will need a marine SSB with data capability and the proper connections for a radio modem. Radio modems are devices that function much like telephone modems, but are designed to interface to and manage radio data. You will also need a computer with Windows 95® or 98® to use *AirMail* software, Jim Corenman's specially-designed tools for radio e-mail. You must obtain a Ship's Station License

from the FCC—your call sign will be part of your e-mail address. Cruisers must also join the *SailMail* association; currently, membership is \$200 per vessel per year. For enrollment details, visit <http://www.sailmail.com>.

Complete Cruising Solutions recommends the ICOM M710 or M700 Pro marine SSB radios and the SCS

Pactor-II Radio Modem for cruisers who want simple, reliable e-mail operation on SSB and/or ham bands. The SCS *Pactor-II Radio Modem* offers unparalleled speed and performance and is rapidly becoming the standard for e-mail access. An increasing number

of Ham e-mail gateways are exclusively Pactor-II-accessible to maximize the amount of traffic they can carry; future *SailMail* gateways may be restricted to Pactor-II only. Give us a call for details and recommendations for purchasing radios or modems.

SailMail—or e-mail with any other radio gateway worldwide—is one of the best methods for keeping in touch onboard. While communicating with e-mail is simple, data transmission rates and quality of connection depends on propagation, your distance from the *SailMail* station, the quality of your radio installation, and the type of equipment used. Allow for some time to become proficient at using your radio, modem, and computer to establish a connection, too. The results are worth it!

**Stan Honey's SSB
SailMail gateway
gives cruisers radio
e-mail—without a
Ham license. Complete Cruising of-
fers SailMail hard-
ware solutions.**

Yeoman: Link GPS, Radar to Paper Charts



"Many cruisers know that they can link a GPS to an electronic chart displayed on a computer or plotter," Weems and Plath's Bob Congdon explained in a recent demonstration, "but few realize they can directly link their GPS and radar to their paper charts. *Yeoman* makes it easy."

The *Yeoman GPS Sport XL* system links an intelligent "mouse" containing a GPS receiver to a paper chart via a portable chart board. With just a few clicks, a navigator can register lat/lon reference points on a chart or chart book—Maptech *ChartKits* are pre-printed with reference points that are pre-programmed into the *Yeoman*. Indicator lights on the mouse then show you how to move it to find your position on the map. Then, click in waypoints to track direction, distance, and time-to-go; all information is displayed on the mouse itself.

The *Yeoman GPS Sport XL* system also links to a radar unit to display position and waypoint information. Other *Yeoman* models interface to commonly available GPS and plotter units.

Visit Complete Cruising Solutions Booth 124 at Pacific Sail Expo for your *Yeoman* demonstration.



Maptech Introduces PhotoCharts, Nav Software

Maptech takes electronic charting to a new level with *Photo ChartKit CD-ROM's* and *Chart Navigator* and *Cruising Navigator* chart plotting software.

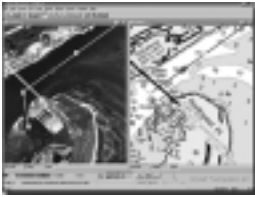


Chart Navigator displays all Maptech charts, plans routes, enters marks and waypoints, and prints custom color charts. At

just \$49.95 it's perfect for "off the water" planning. GPS link not supported.



Cruising Navigator incorporates many popular plotting functions—GPS upload/download, alarms, route management, chart up/course up/north up display, full GPS tracking capability and much more. It's also simple to learn, easy to use, and surprisingly inexpensive.



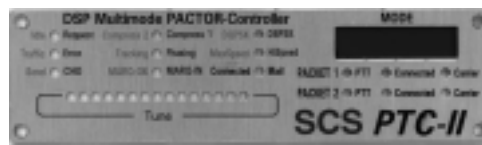
Did you ever wish you could display an aerial photograph next to an electronic navigation chart? Now you can with

Maptech's *Photo ChartKits*. Zoom in or out on the chart, and the photo zooms, too, or plot on chart and photo simultaneously. First CD's available are for Florida and New England cruising locations; call or e-mail for other regions.

SCS Offers Unparalleled Pactor-II Radio Modem Performance

Customer response is unanimous: the *SCS Pactor-II Modem* outperforms any radio e-mail modem available today by unprecedented margins! *SCS Modems* make HF e-mail simpler by helping to solve its most common problems with:

1. **Highest HF Data Transfer Rate.** Pactor-II is at least five times faster than Pactor—a common HF data mode. Faster data rates reduce the electrical power consumed to send messages and promote more reliable operation. HF signals tend to vary; the longer it takes to send a message, the greater the chance of signal fade and loss of link.



2. **Best Weak Signal Performance.** *SCS Pactor-II Modems* automatically provide 18 db of signal gain—equal to a transmitter power increase from 100 to over 6000 watts. When signals fade or propagation is poor, it maintains the link.

3. **Simple, Direct Radio Control.** The *SCS Modem* controls frequency on ICOM M710, 710RT, and 700Pro SSB's, many newer ICOM amateur radios, and other selected SSB or Ham rigs. Just select a station and your computer and modem tune the radio.

All Complete Cruising Solutions *SCS Pactor-II Modems* include custom cables, *AirMail* shareware, computer setup instructions, and ongoing support. Give us a call or e-mail for information about ICOM marine SSB's for a complete e-mail solution.

Choose 14.1" or 15.1" Screen on System 9780 Computers

System 9780 Notebook Computers offer the biggest, brightest screens available today with 14.1 or 15.1 inch screens at 1024 X 768 XGA resolution. With RAM upgrades to 256 Mb, a fast CD-ROM with optional DVD capability, large hard disk, and Intel® processor performance, this system is a natural for electronic charting or any other demanding onboard computing task.



Base *System 9780* notebooks include Intel Pentium II® 266 processors, 64 Mb RAM, a 4 Gb hard disk, 14.1" TFT active matrix screens, a 24X CD-ROM player, 3.5" floppy disk drive, two type II/one type III PCMCIA card slot, serial port, parallel port, PS/2 keyboard/mouse port, stereo speakers, Sound Blaster™ compatibility, Lilon batteries, Windows 98® CD, manuals, and case. Upgrades include RAM—up to 256 Mb, hard disks—to 10 Gb, 15.1" TFT screens, DVD CD-ROM, internal Zip® drives, docking stations, modems, and more.

System 9780 notebooks—as well as other Complete Cruising Solutions computer systems—are built to your specifications. Give us a call or e-mail for recommendations.

CCS Partner ICOM Dealer of the Year!



Congratulations to Complete Cruising Solutions partner *HF Radio On Board*, recently named ICOM's marine radio products Dealer of the Year for 1998! Give owner Don Melcher a call to learn about the best in radio from the best of dealers.

New! ChartView Pro Supports ARCS



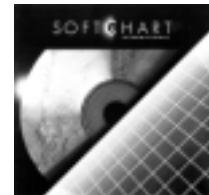
Finally: a U. S. navigation software package that supports British Admiralty ARCS charts for computers. *ChartView Professional* also supports Admiralty tide/current information for worldwide prediction. Call or e-mail for chart, tide regions.

New! GMDSS Electronics from SEA



The *SEA 103* GMDSS VHF handheld is 100% waterproof, drop-proof, and has the longest battery life available—12 hours after up to four years storage, and it floats. Call or e-mail about the complete SEA GMDSS family—radios, EPIRBs, and SARTs.

New! SoftChart Mini Region CD's



Buy just the charts you need with *SoftChart Mini Region CD's*. *Mini Regions* are subsets of standard *SoftChart CD's*, covering limited areas—roughly equivalent to 5-10 NOAA charts. Call for coverage, or visit our website for a detailed chart list.

Radio School Returns; New Ham License Requirements

Have you always wanted to be a Ham but were afraid of the licensing exam? Radio guru Gordon West makes it easy to pass the introductory Ham license exams in just one weekend with *Radio School*. Of 65 students in the '98 class, 65 passed the exam on their first try!

Complete Cruising Solutions is sponsoring an Alameda class Friday evening, Saturday, and Sunday, July 16-18, 1999. In addition to exam prep, *Radio School* and Complete Cruising offer practical hands-on operation information plus a special cruisers' session that covers marine radio installation, weather fax, and e-mail.

In a Notice of Proposed Rulemaking, the FCC requested comments on a reduction of the Morse Code requirement for the General Class license to 5 wpm from 13. Cruisers are watching this proposal with great interest as this is the minimal license required for worldwide voice and e-mail communication over Ham radio. As *Go Cruising* goes to press, no final ruling has been made. However, the comments received by the FCC are overwhelmingly positive; if the new rules are in effect by class time, *Radio School* will prepare students for the General Class exams.

Class fees are \$195—\$250 for General Class—and include all course materials—books, software, and tapes—plus meals and snacks. Special family rates are also available. Call (800) 584-4114 or visit <http://www.waypoints.com> to enroll.

Already have your Tech Plus license? Try our weekend General license upgrade July 17-18. Call for info and prerequisites.

Simplify Satellite System Selection

Confused about which satellite communications system is right for you? Complete Cruising Solutions helps many cruisers choose the "best" system. Consider:

1. *Will you use the system more for voice or data—e-mail or fax?* Some systems are voice-only; other just do data. Choose a system that supports your needs.

2. *Will your e-mail be a few "postcards" or longer documents? Will you transfer files? Will you use a computer?* Different satellite systems handle these data communications differently.

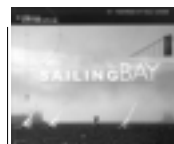
3. *Where will you be cruising and calling? Will you use the system all year?* Choose a system with the rate plan that best meets your needs.

4. *When will you need a system?* Satellite technology is changing rapidly. Complete Cruising watches satellite development closely, and we can advise you if a better system is on the horizon. We'd rather match you with the *right* system for *you*—even if it means that we *both* wait a few months.

No single satellite system is right for every cruiser. That's why Complete Cruising Solutions offers solutions from Iridium®, Inmarsat®, Orbcomm®, and others. Give us a call or send e-mail to review your options.



Meet the Authors in Booth 124 at Sail Expo!



***Sailing the Bay, 2nd Ed.*, Kimball Livingston.** *Latitude 38* calls it "the best book, bar none, on local sailing." Get your copy signed in our booth at Pacific Sail Expo April 17.



***Paradise is Full of Bugs*, W. A. Corley.** A man leaves a promising career to sail to the South Seas—paradise, until he's shipwrecked. Against incredible odds, he launches a salvage operation to save his vessel. Meet Bill April 16-18.



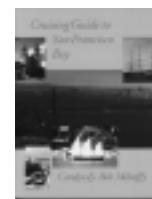
Bob and Carolyn Mehaffy share years of cruising experience with Pacific boaters in three volumes:

Destination Mexico tells you everything you need to know about getting yourself and your boat ready to cruise Mexico.

Cruising Guide to San Francisco Bay documents destinations and directions for enjoying all the Bay offers.

Cruising Guide to the Hawaiian Islands is the first guide to include Midway Atoll as a cruising destination.

Join Bob and Carolyn April 15-18 in three Pacific Sail Expo seminars, and meet them in our booth 124 at the show.



Meet Bob and Carolyn, Bill, and Kimball in the Complete Cruising Solutions Booth 124 at Pacific Sail Expo. Visit www.sailexpo.com for seminar dates, times, and locations.

Attending the largest sailboat show west of the Mississippi? Visit Complete Cruising Solutions at Booth 124, Pacific Sail Expo (Jack London Square, Oakland, CA), April 14-18. Bring this coupon for these show specials:

FREE *SoftChart Mini Region CD* (with any *Cap'n* charting software purchase)

\$5 off any Weems & Plath Software Product (includes *Anchors Away* and *Offshore Toolkit*)

FREE Vinyl Chart Book Cover (with any *Yachtsman* or *ChartKit* purchase)

Buy **two ICOM FRS radios** for just **\$225** (includes batteries and sales tax!)

FREE one hour SSB installation consultation (with any ICOM SSB ordered at the show)

FREE Hornblower Dinner Cruise Tickets (with *ChartView Professional* purchase)

FREE carrying case (with any notebook computer ordered at the show)

\$20 OFF Dashew set—*Cruising Encyclopedia* and *Weather Handbook* (\$150/set; sets only)

Call (800) 584-4114 or e-mail info@waypoints.com for a catalog!



Waypoint/H. F. Radio On Board
1813 Clement Avenue, #24
Alameda, CA 94501

PRESORTED
FIRST-CLASS MAIL
U. S. POSTAGE PAID
OAKLAND, CA
PERMIT NO. 1397

PACIFIC SAIL EXPO
THE LARGEST SAILBOAT SHOW
IN THE WEST!
Jack London Square • Oakland • California

\$100 OFF ADMISSION
Regular admission \$10 • Children under 12 FREE

For more information call **1-800-817-SAIL**
or visit our Web Site @ www.sailexpo.com

Vip/Trade/Press Day:
April 14, 1999, Hours: 10-6
General Admission Days:
April 15-16, 1999,
Thu-Sat 10-6; Sun 10-5

This coupon courtesy of:

Coupon valid for one person only & must be presented at the gate.



Ask the Complete Cruiser...

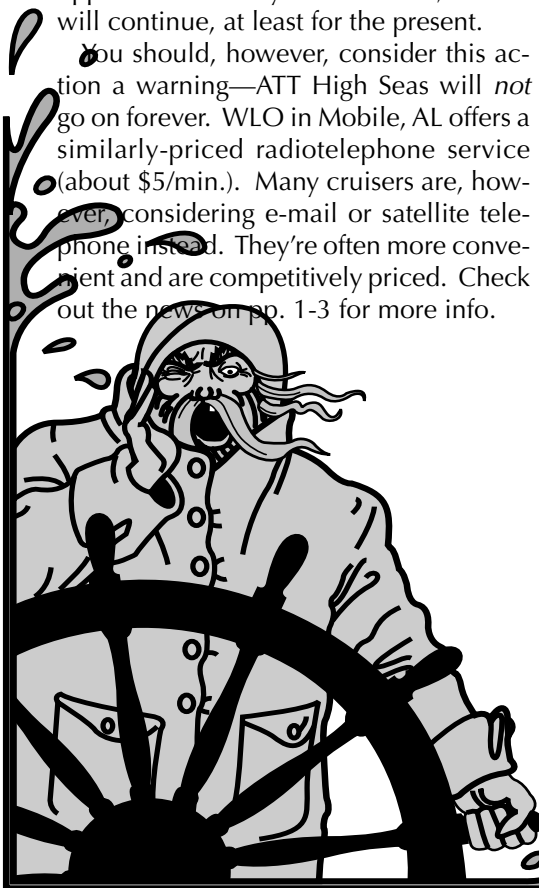
Dear Complete Cruiser,

I've heard that the ATT High Seas Operator service is no more. How am I going to call home?

Out of Touch

You know what they say: it's not over until the fat lady sings! ATT *did* announce in January that their High Seas Marine SSB Radiotelephone service would close 2/28/99. However, their decision met such wild opposition that they reconsidered; service will continue, at least for the present.

You should, however, consider this action a warning—ATT High Seas will *not* go on forever. WLO in Mobile, AL offers a similarly-priced radiotelephone service (about \$5/min.). Many cruisers are, however, considering e-mail or satellite telephone instead. They're often more convenient and are competitively priced. Check out the news on pp. 1-3 for more info.



Dear C. Cruiser,

I recently cruised the Caribbean with a computer charting system. It was great, except for one chart where I was consistently plotted a half mile east of my real position. What's wrong with my system?

Virtually Beached

'Sounds like an issue with *datum*. A datum is a reference that allows a cartographer to establish a latitude/longitude grid for a chart. Modern charts typically use the WGS84 datum; most GPS units assume its use. Some older or foreign charts may utilize a different datum. No problem—unless your GPS and chart disagree. If they do, an incorrect lat/lon grid will be applied to the GPS position relative to the chart, and your position will appear to be mis-reported.

Datum is reported in a chart's title block and duplicated through your charting software's chart info field. GPS datum can be changed in your unit's setup menu.

Dear Complete Cruiser,

I want to install a marine SSB transceiver on my multihull, but it doesn't have a backstay. What can I use for an antenna?

Backless in Bimini

What you need is a good whip! A SSB fiberglass antenna is durable and designed to work with available antenna tuner and ground plane systems. In practice, its performance is comparable to that of an insulated backstay antenna system; computer antenna modeling studies suggest that its

performance may actually be superior to a backstay antenna. At under \$250, it also can be less expensive than insulating a backstay; and, it may be reassuring to cruisers with backstays to *not* cut their rig.

You could also use a shroud or a long wire antenna. We provide consultation at no charge to cruisers who purchase radios from Complete Cruising; give us a call or e-mail.

Yo, Cruiser Dude,

I want to run my computer weather fax/radio e-mail at the same time as my GPS/charting program, but my laptop only has one serial port. Possible?

Wired

Yes, possible, indeed (and that's Ma'am). If your laptop computer has an open PCMCIA slot, you can add not one, but *two* serial ports with a *Dual Port Serial PCMCIA Card*. They're also very simple to install *if* your laptop has open IRQ's/resources. If you're unsure how to configure your computer's resource settings, we can install the card for you for a small charge.

In the future, you may be able to add serial ports through your computer's USB port. Today, they're relatively rare and expensive.

Send your questions to "Ask the Complete Cruiser...", Complete Cruising Solutions, 1813 Clement Ave., #24, Alameda, CA 94501; e-mail to ccruiser@waypoints.com.

For details on these and other frequently asked questions, call for your free copy of the Complete Cruising Solutions catalog at (800) 584-4114 or visit our web site at <http://www.waypoints.com> to download.