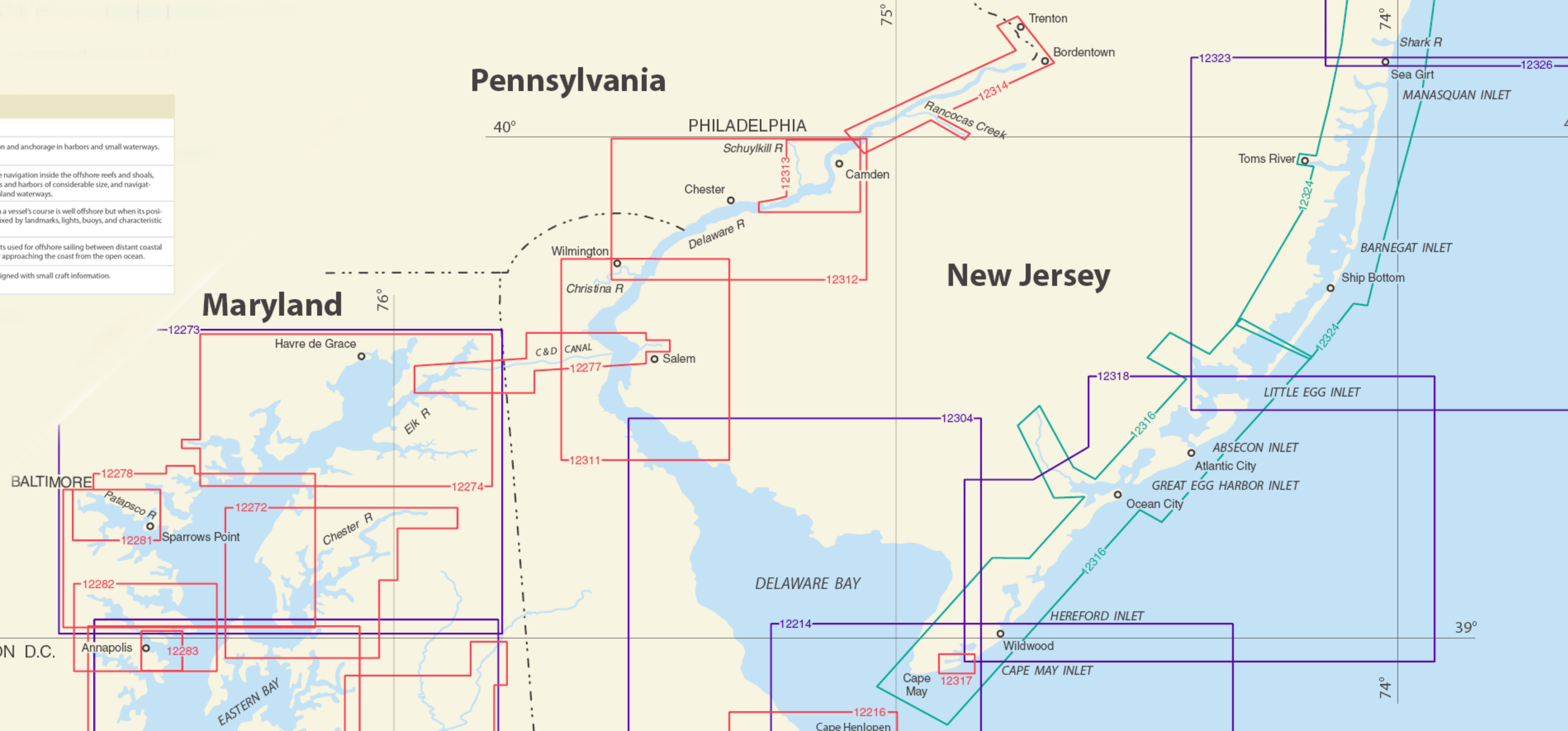


Color Key for Charts		
Type of Chart	Scale	Purpose
HARBOR CHARTS (outlined in red)	1:50,000 and larger	For navigation and anchorage in harbors and small waterways.
COAST CHARTS (outlined in purple)	1:50,001 to 1:150,000	For coastwise navigation inside the offshore reefs and shoals, entering bays and harbors of considerable size, and navigating certain inland waterways.
GENERAL CHARTS (outlined in purple)	1:150,001 to 1:600,000	For use when a vessel's course is well offshore but when its position can be fixed by landmarks, lights, buoys, and characteristic soundings.
SAILING CHARTS (outlined in purple)	1:600,001 and smaller	Plotting charts used for offshore sailing between distant coastal ports and for approaching the coast from the open ocean.
SMALL-CRAFT CHARTS (outlined in green)	1:80,000 and larger	Specially designed with small craft information.

Pennsylvania



Maryland

New Jersey

WASHINGTON D.C.

